

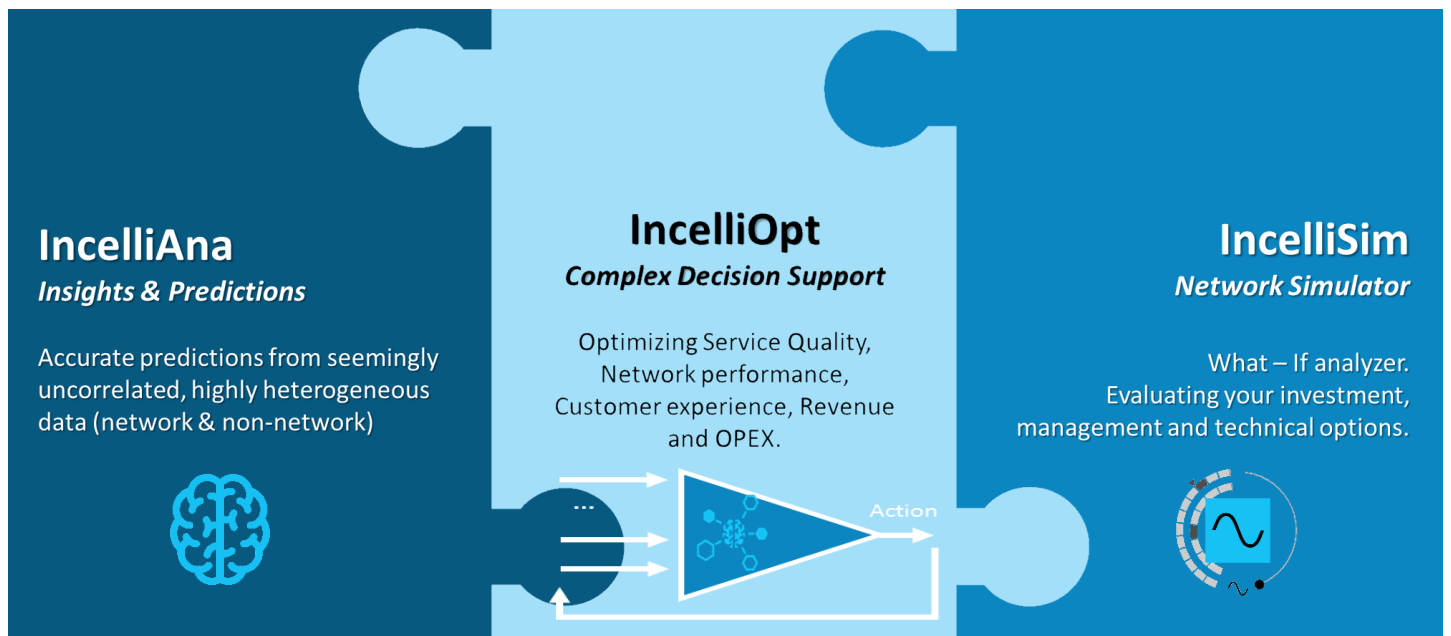


# Incelligent

Knowledgeable management of wireless networks.

## *Mobile, Wi-Fi, IoT, Access and Core Networks at their full potential*

Leveraging network and non – network data, Incelligent enables Network Operators **advance** their **Retention** processes, Optimize **Network Management**, **Monetize Big – data** and become IoT ready.



*The key modules of Incelligent software suite; Patent pending*

## *The oracle of Networks*

The insights and predictions generated by the advanced Incelligent algorithms enable a Telecom Operator to achieve:

- ✓ Improved customer experience
- ✓ Effective customer retention
- ✓ Higher revenue at lower costs
- ✓ Proactive churn management
- ✓ Optimization of resource use
- ✓ Energy savings & management automation
- ✓ Big data monetization
- ✓ Continuous service innovation

# Analyze. Predict. Pro – act.

## Churn management

- ✓ When & Where will my users experience problems?
- ✓ What is the best action – course to proactively optimize User Experience?
- ✓ Which users will have poor experience?
- ✓ How can I mitigate potential churn?
- ✓ How can I improve my NPS?
- ✓ How do my customer acquisition actions impact my current high – value customers?

## Monetize Big Data

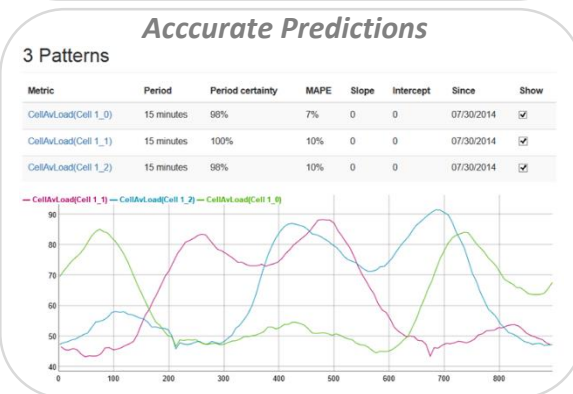
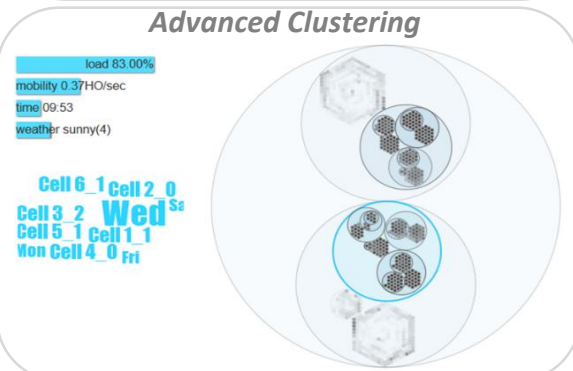
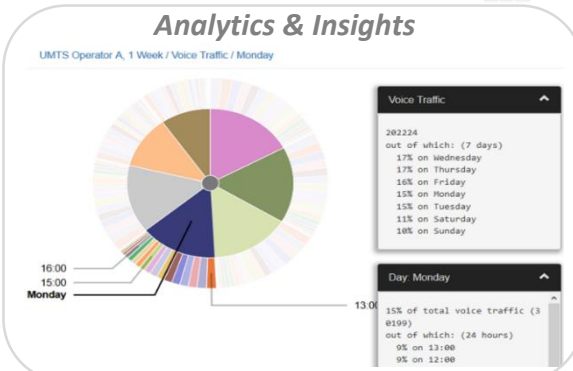
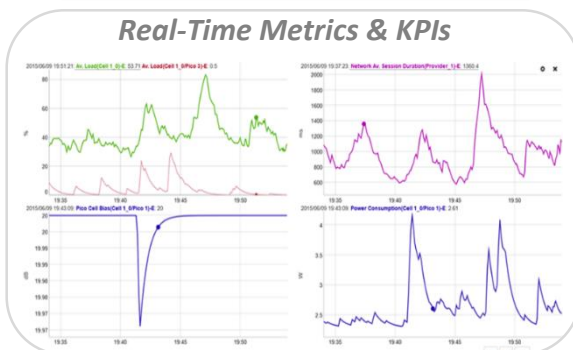
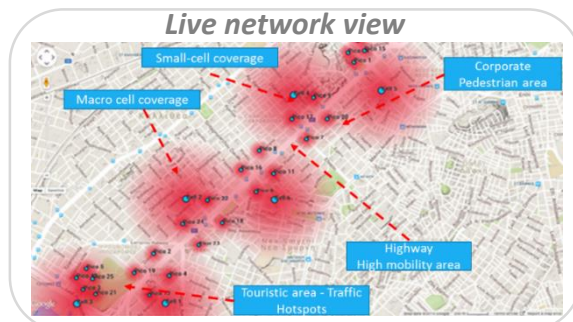
- ✓ How can my network data generate value for transportation, retail or safety applications?
- ✓ Which customer segments will generate footfall at specific hotspots and when?
- ✓ How can I optimize my logistics considering the predicted behaviors of consumers?

## Optimize resource use

- ✓ Where and when will I waste energy, spectrum or other scarce resources?
- ✓ What and when should I reallocate in order to increase efficiency?
- ✓ Where and when is it safe to reform my spectrum?

## What if scenarios

- ✓ How will an investment affect my OPEX, Revenue and Customer Experience?
- ✓ How would my network behave at extreme situations?
- ✓ Which SON algorithm best fits my challenge?
- ✓ Would an alternative management method help?



**SAP® startup.focus.**  
Member

**ORACLE®** Silver Partner